

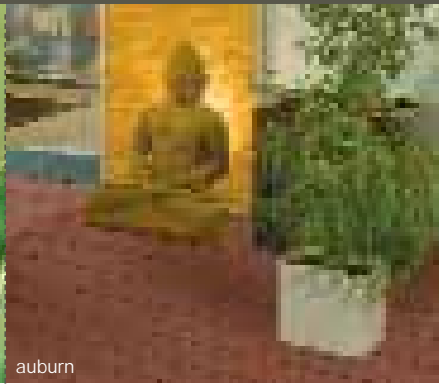
# TERRACE SYSTEM



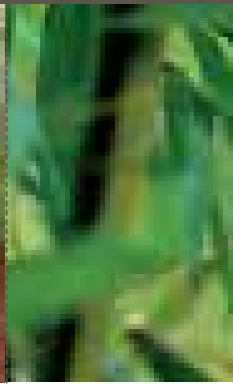
Time to unwind ...

**10 Year  
Warranty**

**"As strong as stone -  
as soft as wood."**



auburn



## For the greatest of demands ...

The garden – an element of design that is forever increasing in importance. A terrace also is no longer an area around the house, but now a connecting element between house and garden.

Terraces are ideal for unwinding on after a long day of work, socializing on with friends - they create an ideal setting and atmosphere for relaxation.

### CONTENTS

#### Products:

#### WPC Terrace System:

Massive-profiles	4
<b>SOLID</b> Pinuform solid plank	5

#### Technical Information:

Assembly instructions	6
Standard delivery forms	7

# SOLID



SOLID ...  
Massive-profiles

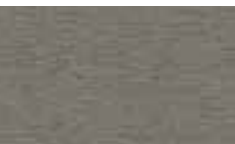
## Pinuform solid plank

The creation of Pinuform represents the development of a very high quality, long-lasting material. In a special heating process natural timber fibres, which effectively bind CO<sub>2</sub>, are fused with environmentally friendly polypropylene.

The material gives the elegant terrace system many positive qualities. It is splinter-free and thus provides a pleasant and natural feel to the surface. In Addition, it is resistant to weathering, rigidly formed, non-slip and easy to maintain. Further more, it is 100 % recyclable.

For this high quality Pinuform material we grant a 10-year warranty in accordance with our terms and regulations.

10 Year  
Warranty



light grey P-001



dark brown P-002



auburn P-003



anthracite P-004



### Please note:

Wood Oil is available in tins. It gives the Pinuform material additional protection and a shine.





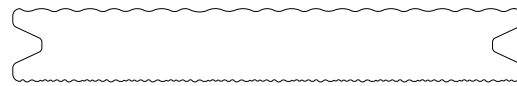
light grey | 25 x 175 mm

## For **years** of pleasure on your terrace ...

Pinuform solid planks have a timelessly elegant look. The relatively broad width of the planks creates a homogenous appearance. Two different surface textures enable you to choose either a timber or stone look, depending on which side is selected.

Interesting shades of colour – light grey, dark brown, auburn and anthracite – provide further scope for creativity.

And if you opt for a round or oval terrace shape – that's no problem!  
Pinuform solid planks are solid, coloured inside and out and can be trimmed to any shape.



DTS 110



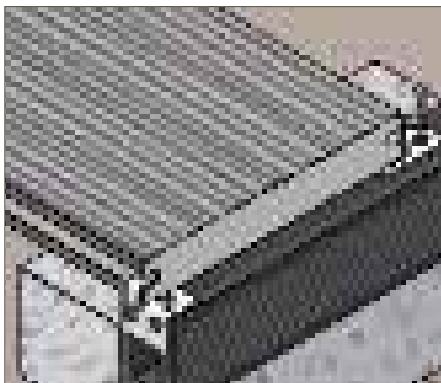
anthracite | 25 x 175 mm



It is necessary to have a sustainable base consisting of crushed stones, gravel, loose chippings, paving stones, tiles, concrete or equivalent. Ensure adequate drainage.

The grid must have a flushed alignment and be mounted in a downward slope of 1% (away from the house) enabling rain-fall to flow off.

Keep the planking at a 10 mm distance from walls or fixed components.



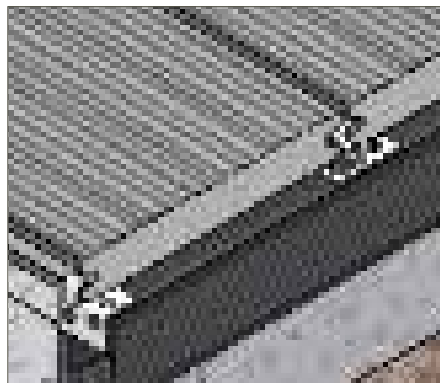
Simple and concealed fixing of the planks is achieved by use of the assembly fasteners. Centre the edge fasteners on the surface of the grid. Pre-drill  $\varnothing$  2.5 mm holes and fasten the edge-fastener to the sub-structure using stainless steel screws (4 x 35 mm).

Push the first plank, sideways, as far as it will go into the edge fasteners.

Subsequently, fasten the plank on the opposite grooved side to the grid using



The space between the beams must not exceed 50 cm. If the terrace planks are to be assembled diagonally, the distance between the beams must be reduced accordingly. The beams can either be placed on their narrow side or on their wide side and they should lie on footings to protect against moisture. Concrete slabs (5 x 20 x 20 cm), can be used as suitable footings and should be laid at intervals not exceeding 50 cm.



assembly fasteners. This is carried out by pushing the fasteners parallel and as far as possible into the lateral groove and fastening them with stainless steel screws (4 x 3.5 mm, countersunk, self-tapping) onto the grid.

Make sure that the screw heads flush with the surface of the assembly fasteners.

Insert the next plank, parallel to the previous one, as far as it will go into the assembly fasteners and, once again

In addition to their elegant appearance the 175 mm width of the planks ensures a fast assembly when laying your terrace. The use of assembly fasteners provides a consistent gap of approximately 3 mm between planks.

Terrace planking laid end to end should be placed on separate grid beams and fixed with assembly fasteners. Make sure that there is adequate expansion room between planks (min. 5 mm).

No special care is needed. Simply clean the terrace with water, or use a pressure cleaner for heavily contaminated areas.

**Note:** The recommended distance measurements between supports are based on static calculations.



fasten it on the opposite side with the use of assembly fasteners.

Carry on in this manner until the desired terrace size is reached.

Insert the last plank into the assembly fasteners of the previous plank.

Latch the edge fasteners into the groove of the last plank and fasten them onto the traverse subgrid. Alternatively, one can fit the last plank onto the subgrid from above, using stainless steel screws.

Please pre-drill here.




**SOLID** Massive-profiles



**Pinuform**

Thickness in mm    Width in mm    Weight in kg/m    Colours    Lengths in m

 DTS 110	25	175	5,30	light grey dark brown auburn anthracite	3,00 / 4,00 / 5,00 / 6,00
---	----	-----	------	--	---------------------------

**Accessories**

**Skirting**



LRR 110

10	88	1,10	light grey dark brown auburn anthracite	4,00
----	----	------	--	------

**AIR** Hollow chamber

Thickness in mm    Width in mm    Weight in kg/m    Colours    Lengths in m

**Accessories**

**Grid**



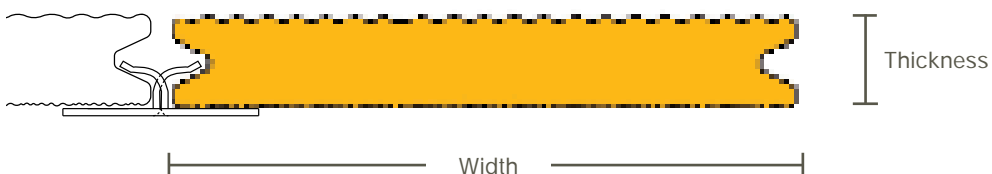
UCL 210

40	60	1,78	black	2,00 / 4,00
----	----	------	-------	-------------

**Fastening**



Width in mm	Length in mm	Thickness in mm	Material
35	40	1,5	V2A stainless steel
35	20	1,5	V2A stainless steel



MOCO products:



Sales:



J. A. Molfenter GmbH & Co. KG  
Timber import, sawing and planing mill  
Blaubeurer Straße 82 | D-89077 Ulm  
Tel.: +49 (0)731-165 0 | Fax: +49 (0)731-165 215  
E-Mail: info@moco.de | www.moco.de

MOCO Holzwerk GmbH & Co. KG  
Timber import, sawing and planing mill  
Bauhofstraße 1 | D-04683 Naunhof OT Ammelshain  
Tel.: +49 (0)3 42 93-518 0 | Fax: +49 (0)3 42 93-518 23  
E-Mail: kontakt@moco.de | www.moco.de

Manufacturer  
PINUFORM GmbH & Co. KG  
Bauhofstraße 1 | D-04683 Naunhof OT Ammelshain  
Tel.: +49 (0)3 42 93-5 18 0 | Fax: +49 (0)3 42 93-5 18 23  
info@pinuform.de | www.pinuform.de